

SIEMENS



Premium Add-Ons for SIMATIC WinCC

SIMATIC HMI

Catalog
ST 80 AO

Edition
2014

Answers for industry.

Related catalogs

SIMATIC HMI / ST 80/ST PC
PC-based Automation
Human Machine Interface Systems
PC-based Automation

E86060-K4680-A101-C1-7600



SITRAIN ITC
Training for Industry

Only available in German
E86060-K6850-A101-C4



Products for Automation CA 01
Automation and Drives
Interactive Catalog, DVD

E86060-D4001-A510-D3-7600



Industry Mall
Information and Ordering Platform
in the Internet:



www.siemens.com/industrymall

SIMATIC HMI

Premium Add-Ons for SIMATIC WinCC



Catalog ST 80 AO · 2014

Supersedes:
Catalog ST 80 AO · 2013

Refer to the Industry Mall for current updates of
this catalog:

www.siemens.com/industrymall

The products contained in this catalog can also be found
in the Interactive Catalog CA 01.

Article No.: E86060-D4001-A500-D3-7600

Please contact your local Siemens branch.

© Siemens AG 2014

Introduction	
Introduction	2
Connectivity	
System software	
PM-OPEN IMPORT	4
PM-OPEN EXPORT	5
PM-OPEN TCP/IP	6
Historian CONNECT ALARM	7
WinCC OPC-Alarm & Event Client	8
TOP Server	9
TOP Server UCON	12
IEC 61850 communication channel	13
Process Management	
System software	
PM-CONTROL	14
PM-QUALITY	15
Sector products	
Library 7KM PAC3200 for SIMATIC WinCC	16
SmartLib function library	17
ACRON for WinCC/PCS 7	18
Configuring tools	
DCC Translation Editor	21
Diagnostics and maintenance	
Alarm Management System ACC	22
System diagnostics PROFIBUS DP/PA	24
System software	
PM-MAINT	25
PM-ANALYZE	26
ShutDown WinCC	27
Appendix	
Conditions of sale and delivery	28



The products and systems described in
this catalog are manufactured/distributed
under application of a certified quality
management system in accordance with
DIN EN ISO 9001. The certificate is
recognized by all IQNet countries.

Introduction

Overview

SIMATIC WinCC (TIA Portal)

SIMATIC WinCC (TIA Portal) is part of a new, integrated engineering concept that offers a uniform engineering environment for programming and configuring control, visualization and drive solutions.

WinCC (TIA Portal) is the software for all HMI applications ranging from the simplest operation solutions with Basic Panels to SCADA applications on PC-based multi-user systems. The following versions are currently available:

- SIMATIC WinCC Basic, Comfort, Advanced and Professional V12

SIMATIC WinCC flexible

SIMATIC WinCC flexible is the consistent further development of the SIMATIC HMI software products. WinCC flexible offers a significant boost in configuring efficiency and new innovative automation concepts for machine-level applications.

SIMATIC WinCC

SIMATIC WinCC is the SCADA system for scalable process visualization to suit any requirement – from the single-user through to redundant multi-user systems, as well as for plant operation and monitoring over the Internet. WinCC is also the ideal information hub for IT and business integration, e.g. for the integration of MES and ERP systems. The SIMATIC IT MES system is recommended for scheduling and optimizing complex production processes.

Solutions/add-ons for different sectors and technologies

WinCC stands out for its diversity of applications. The basic system is designed to be independent of any specific technology or industrial sector, to be modular and flexibly expandable, and to permit not only single-user applications in mechanical equipment manufacture, but also complex multi-user solutions, or even distributed systems with several servers and clients in plant engineering.

WinCC applications that are precisely tailored to the requirements of the industrial plant have thus been created for every sector. These applications are further developed into turnkey add-on products by partners both inside and outside Siemens. If these add-ons meet the general conditions (see "More Information") of the Premium Add-on Program for WinCC, they are promoted to the status of Premium Add-on.

A distinction is made between:

- **WinCC flexible and WinCC options** are available for a host of expansions of the WinCC basic system and they can be combined freely to meet your requirements. The options are subjected to an extensive test with the basic system. As products from Siemens, WinCC flexible/WinCC options are supported by the central Hotline and Specialist Support. are available for a host of expansions of the WinCC basic system and they can be combined freely to meet your requirements. The options are subjected to an extensive test with the basic system. As products from Siemens, WinCC flexible/WinCC options are supported by the central Hotline and Specialist Support.
- **WinCC Premium Add-ons** are the add-ons presented in this catalog. They have been developed for solutions in the SCADA area. SIMATIC IT, the MES system from Siemens, is recommended for complex solutions in the MES area. SIMATIC IT with WinCC and PCS 7 offers an integrated solution. The Premium Add-ons are checked, for example, in the Siemens Test Center for their compatibility with the basic WinCC system and supported in the first instance by the central Technical Support. In addition, the suppliers of the WinCC Premium Add-ons must comply with certain general conditions.

You can find some important general conditions in the column on the right under "Further information". Premium Add-ons are important application-specific and sector-specific add-on products that supplement WinCC. WinCC Premium Add-ons are not products of Siemens Industry Automation and Drive Technologies.

More information

Siemens Premium Add-on Program for WinCC

The Siemens Premium Add-on Program sets uniform general conditions for the WinCC flexible/WinCC Premium Add-ons.

Product responsibility, conditions of use

The product responsibility for a Premium Add-on product generally lies with the relevant add-on manufacturer, referred to below as the "Partner". You can find the address of the partner in the "More Information" section. This permits you to contact the appropriate partner directly. There you can obtain the ordering details and product details, and all sales information relevant to the Premium Add-on product. Siemens AG accepts no liability and provides no guarantee for the products of external partners.

Support

All Premium Add-on products receive central Hotline support Europe-wide (and worldwide in accredited cases), in the first instance from the field-proven Customer Support (CS).

Release support

The partner with product responsibility adapts the Premium Add-on products to keep them abreast of the latest version of the WinCC flexible/WinCC basic system including service pack.

Total discontinuation

If a Premium Add-on product is discontinued by the partner, you will be informed of this via SIMATIC HMI Update. SIMATIC HMI Update is a newsletter that you can obtain on subscription from Customer Support.

Conditions of sale and delivery

External partners organize the sale and delivery of their products independently. Their own terms and conditions of business and delivery apply.

Partners' Internet sites

The catalog contains hyperlinks to the web sites of third-party companies.

Siemens is not responsible for the contents of these Web sites, nor does Siemens adopt these Web sites and their contents, as Siemens does not control the linked information and cannot be held responsible for the content and information they contain. You therefore use these links at your own risk.

Pricing information

Pricing information for the products with order numbers in this catalog can be obtained via the interactive Catalog CA 01 (CD/DVD), the Industry Mall on the Internet or on request from your local Siemens Partner. The relevant external partner will provide pricing information for the products without order number.

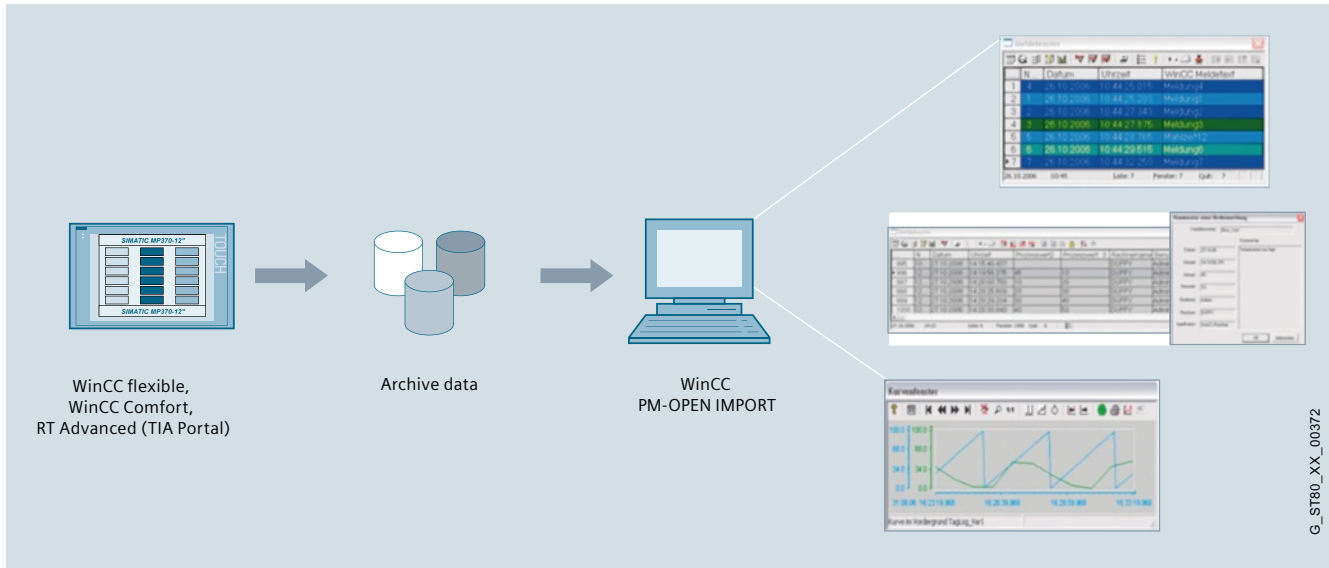
Internet catalog

The Premium Add-on Catalog for WinCC flexible/WinCC is available as an online catalog and e-book on the Internet and is updated every year.

Connectivity

PM-OPEN IMPORT system software

Overview



Process data (tags and messages) and operator actions (audit trail) are archived locally as CSV files on SIMATIC WinCC Comfort Panels or systems with WinCC RT Advanced (TIA Portal). With PM-OPEN IMPORT, this data can be centrally and chronologically compiled on a higher-level WinCC system and also be safely saved there in database format for the long term. The original time stamps are, of course, retained when importing the data into the WinCC system. The standard resources of the higher-level WinCC system (WinCC RT Professional (TIA Portal), WinCC and PCS7) are used for displaying and analyzing.

With PM-OPEN IMPORT, the requirements for the safe, central and long-term archiving of relevant data in the overall automation landscape (from the panel to the higher-level SCADA system) are satisfied as per the guidelines of the Food and Drug Administration (FDA) 21 CFR Part 11 and the EU directive 178/2002.

Function

PM-OPEN IMPORT offers the following import functions:

- Import of WinCC Comfort/WinCC RT Advanced Data Logs
The data logs in CSV format are imported into the WinCC Tag Logging or into the WinCC RT Professional Archives and can be displayed as a table or as a trend using the standard controls.
- Import of WinCC Comfort/WinCC RT Advanced Alarm Logs
The alarm logs in CSV format are imported into the WinCC Alarm Logging or into the WinCC RT Professional Messages and can be displayed as a table using the standard control.
- Import of WinCC Comfort/WinCC RT Advanced Audit Trails
The Audit Trail logs in CSV format are imported into the WinCC Alarm Logging or into the WinCC RT Professional Messages and can be displayed like WinCC operating messages using the standard control. The data "User name," "Comment" and, if applicable, "Tag name," "Old value" and "New value" are also imported.

Configuration

Only one PM-OPEN IMPORT is required per WinCC PC. There is no software restriction on the number of systems that can be connected. Access on the WinCC side takes place exclusively via Ethernet on a Panel or PC Runtime with WinCC flexible/RT Advanced.

Ordering data

PM-OPEN IMPORT system software

Single-user system; can run on interconnected WinCC system

Article No.

9AE7114-1SS01-1AA0

Note:

Additional PM-OPEN IMPORT configurations available on request.

More information

Siemens AG
Industrial Solutions and Services
WinCC Competence Center Mannheim

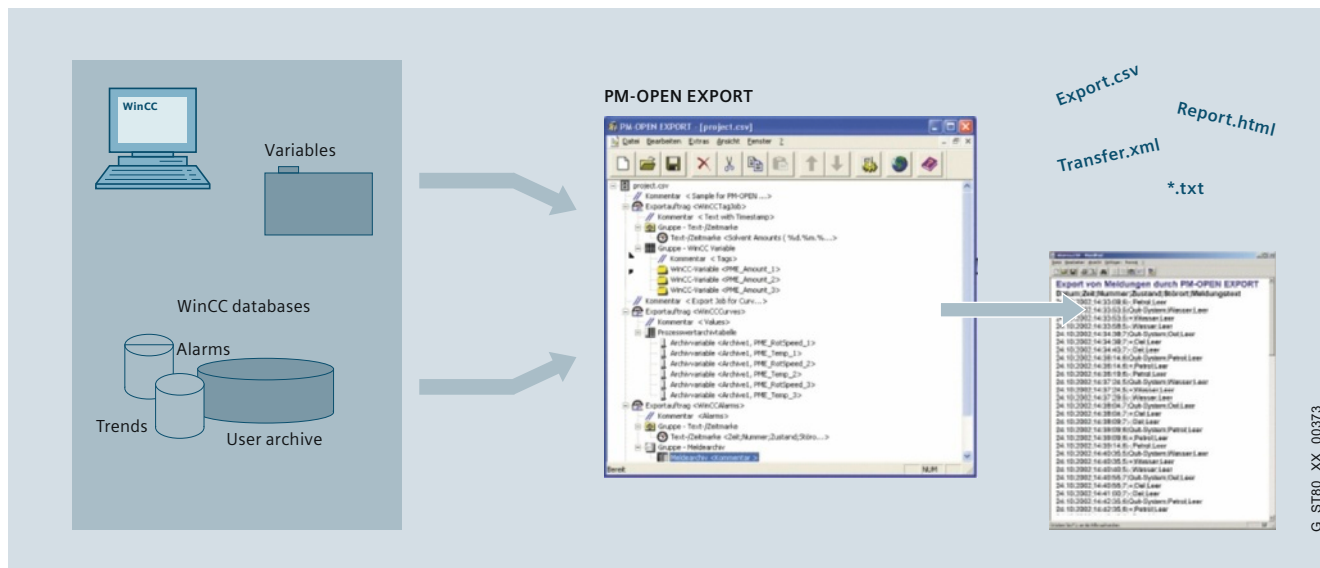
Phone: +49 (0)621 456-3269
Fax: +49 (0)621 456-3334

E-mail: WinCCAddon.automation@siemens.com

Additional information is available in the Internet at:

www.siemens.com/process-management

Overview



Flexible and low-cost solution for exporting current process data (tags) and archive data (message archive, process value archive, user archive) from WinCC/PCS7/WinCC RT Professional (TIA Portal) into freely structurable text files (ASCII, CSV, HTML/XML format).

Function

PM-OPEN EXPORT can export to any local memory media or to memory media enabled on the network. For example, it can be used to make data available on a network server for further processing or analysis.

The configured export jobs are processed automatically "in the background". Triggering of the data export can be cyclical, time-controlled, or event-driven.

Flexible and individual structuring of the destination file is a significant benefit. As well as the exported data, the destination file can also contain, for example, static text and time stamps.

Another advantage of PM-OPEN EXPORT is the possibility of using it in redundant WinCC configurations.

Ordering data

PM-OPEN EXPORT system software

Single-user system; can run on interconnected WinCC system

Article No.

9AE7106-1SS01-1AA0

Note:

Additional PM-OPEN EXPORT configurations available on request.

More information

Siemens AG
Industrial Solutions and Services
WinCC Competence Center Mannheim

Phone: +49 (0)621 456-3269
Fax: +49 (0)621 456-3334

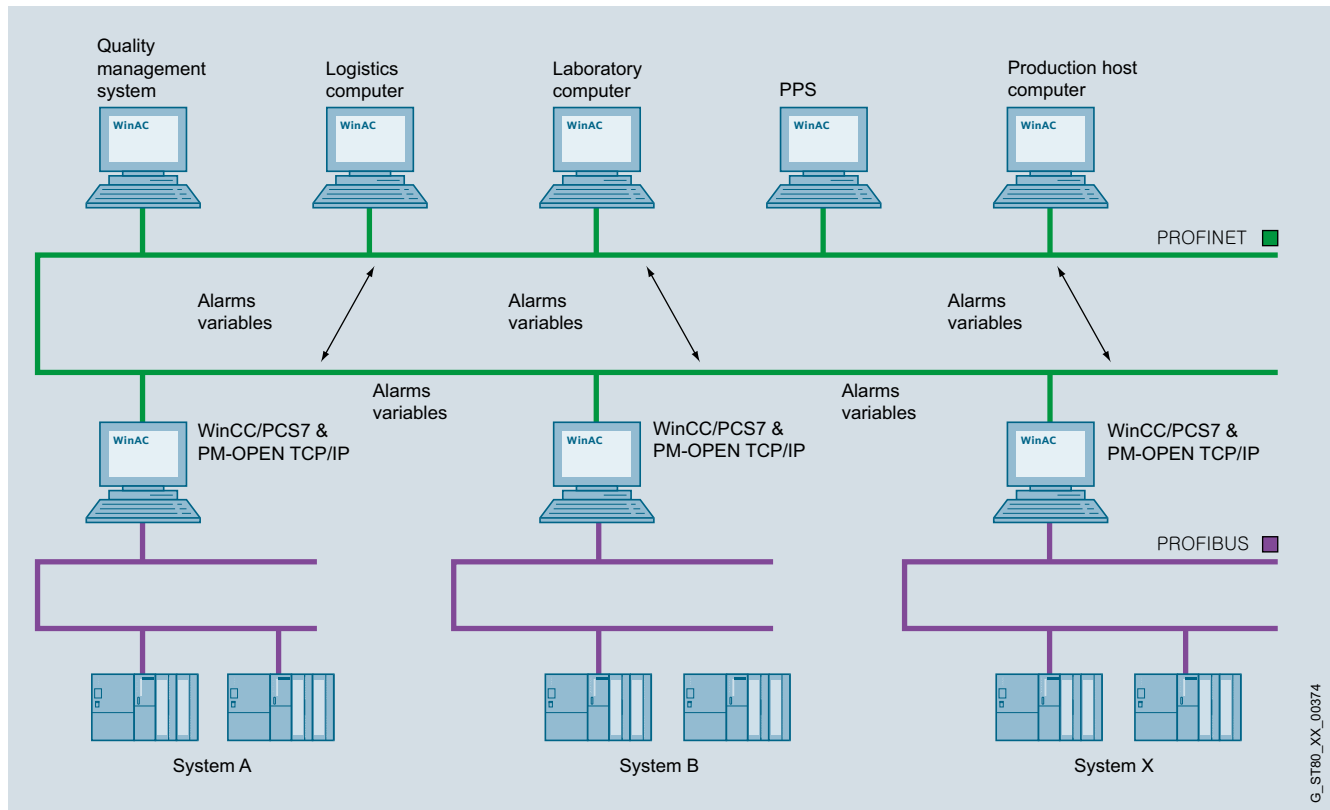
E-mail: WinCCAddon.automation@siemens.com

Additional information is available in the Internet at:
www.siemens.com/process-management

Connectivity

PM-OPEN TCP/IP system software

Overview



PM-OPEN TCP/IP

Where extensive special solutions were previously required for connecting PCs online, PM-OPEN TCP/IP offers a low-cost solution for connecting computer systems (PPS, laboratory, logistics and quality management systems, etc.) with the automation and process control level.

Function

PM-OPEN TCP/IP permits the bidirectional exchange of data (tags, messages) between WinCC/WinCC RT Professional (TIA Portal) and one or more computers (link partners) that communicate using the TCP/IP protocol. Another use for PM-OPEN TCP/IP is to link several WinCC stations for exchanging tags and messages or acquiring them centrally. In addition, PM-OPEN TCP/IP supports redundant WinCC configurations without any problems.

Thanks to the integration of "Visual Basic for Applications" (VBA), PM-OPEN TCP/IP offers an ideal development platform for implementing individual IT solutions. SIMATIC WinCC and PM-OPEN TCP/IP thus form a central information hub for local and company-wide IT integration, e.g. connection of the automation level to MES or office applications.

Ordering data

PM-OPEN TCP/IP system software

Single-user system; can run on interconnected WinCC system

Article No.

9AE7105-1SS01-1AA0

Note:

Additional PM-OPEN TCP/IP configurations available on request.

More information

Siemens AG
Industrial Solutions and Services
WinCC Competence Center Mannheim

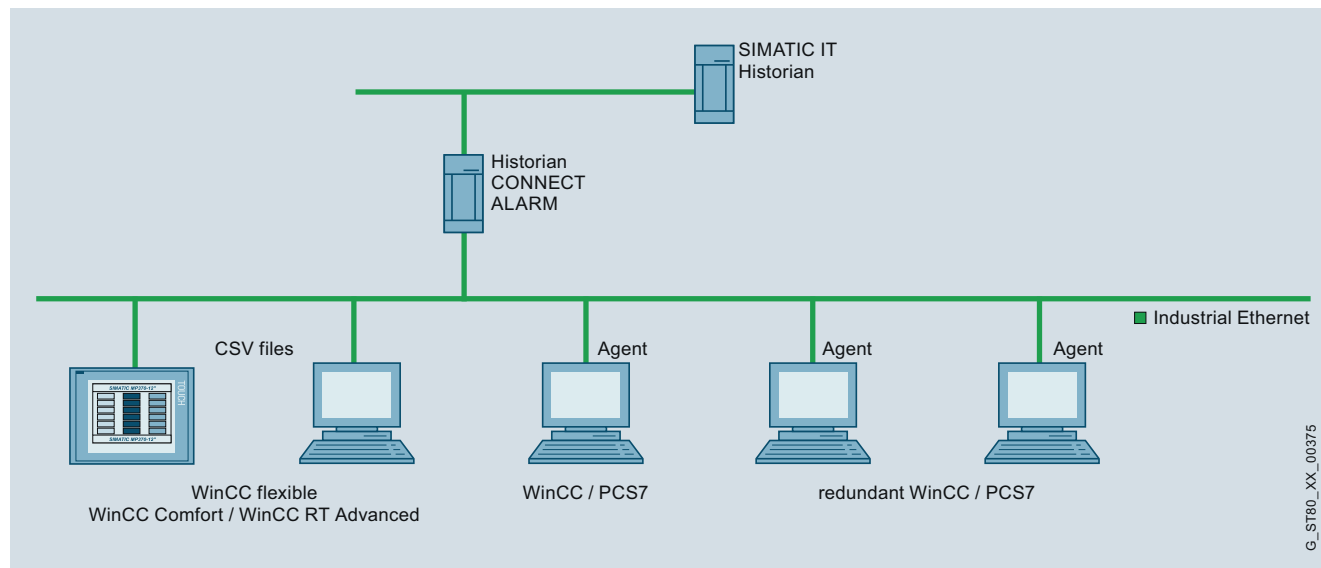
Phone: +49 (0)621 456-3269
Fax: +49 (0)621 456-3334

E-mail: WinCCAddon.automation@siemens.com

Additional information is available in the Internet at:

www.siemens.de/process-management

Overview



G_ST80_XX_00375

When using SIMATIC IT Historian for long-term archiving and analysis of messages, it is frequently necessary to transfer messages from different WinCC, PCS7, WinCC RT Professional (TIA Portal), WinCC RT Advanced (TIA Portal) systems or from WinCC flexible / WinCC Comfort devices. With the WinCC Add-on Historian CONNECT ALARM as an alarm interface, different data sources can be connected.

Ordering data

Article No.

Historian CONNECT ALARM system software	9AE7115-1SS01-1AA0
Alarm agent for WinCC	9AE7115-2SA01-1AA0
Alarm connection for a Panel	9AE7115-3SA01-1AA0

Function

Connecting to WinCC systems

Different WinCC stations can be used as the source of the messages. The WinCC versions V5, V6 and V7 and WinCC RT Professional (TIA Portal) are supported here.

An agent installed on the WinCC system captures the messages there and forwards them to the alarm interface using TCP/IP. Assignment of the WinCC message columns to the message columns of the SIMATIC IT alarm filter can be freely configured by the user.

Connecting to SIMATIC HMI Comfort Panels

Comfort Panels and WinCC RT Advanced systems are able to store their messages in an archive as a CSV file. The CSV files are copied to the PC of the alarm interface over an Ethernet network, either cyclically or at the end of the batch. A connection license is required for each connected panel.

The alarm interface reads the messages from the files and enters them in SIMATIC IT Historian. Assignment of the message columns in the CSV files to the message columns of the SIMATIC IT alarm filter can be freely configured by the user.

More information

Siemens AG
Industrial Solutions and Services
WinCC Competence Center Mannheim

Phone: +49 (0)621 456-3269
Fax: +49 (0)621 456-3334

E-mail: WinCCAddon.automation@siemens.com

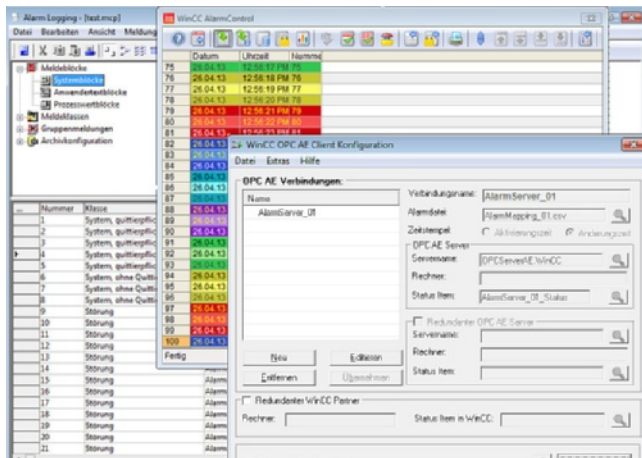
Additional information is available in the Internet at:

www.siemens.com/process-management

Connectivity

WinCC OPC Alarm & Event Client

Overview



WinCC OPC AE Client

Up-to-date HMI systems from Siemens AG, such as WinCC and PCS 7, have long made it possible to request, accept, and process values. Alarm integration of own and third-party systems is not included yet, but it is becoming increasingly important to ensure the tracing of certain processes.

Benefits

Technical highlights

- Transfer of OPC alarms to the WinCC alarm signaling system
- Redundancy capability
- Connection monitoring and automatic reconnect
- A few simple configuring steps
- Assignment of the OPC alarms to WinCC messages via CSV file
- Investment protection through the use of standard interfaces
- Automatic starting and stopping with WinCC/PCS 7
- Free demo version available for preliminary testing
- Connection to OPC AE servers (this interface has been globally specified by the OPC Foundation)
- Integration process for relevant alarms in addition to the process values
- Central alarm group server may be configured using many different OPC AE servers
- Connection to redundant WinCC server pairs and redundant OPC AE servers

Function

This WinCC Premium Add-on enables you to transfer alarms and messages from any specification-compliant OPC Alarm & Event (AE) server to a WinCC alarm system. The client's primary task is to receive alarms from the OPC AE server and to forward them in a suitable way to the WinCC alarm system.

WinCC and the WinCC OPC AE client must run on the same system. The OPC AE server can be located on another system. The WinCC OPC AE client is started and stopped with WinCC Runtime. The connection to the OPC AE server is checked cyclically and the status is reported to WinCC by means of a connection status tag. Interrupted connections are re-established autonomously when possible. The WinCC AE client can also be used in a redundant WinCC environment.

Ordering data

Article No.

WinCC OPC AE Client V2 (up to 100 alarms)

2XV9450-1ST21

Single License for 1 installation, 2 languages (English, German) Runtime software and electronic documentation on CD-ROM According to the system requirements of WinCC V6 to V7

WinCC OPC AE Client V2 (up to 5000 alarms)

2XV9450-1ST22

Single License for 1 installation, 2 languages (English, German) Runtime software and electronic documentation on CD-ROM According to the system requirements of WinCC V6 to V7

WinCC OPC AE Client V2 (full version)

2XV9450-1ST23

Single License for 1 installation, 2 languages (English, German) Runtime software and electronic documentation on CD-ROM According to the system requirements of WinCC V6 to V7

More information

Siemens AG
Industry Sector Industry Automation Division
IT4 Industry Customer Support
Werner-von-Siemens-Straße 60
91052 Erlangen

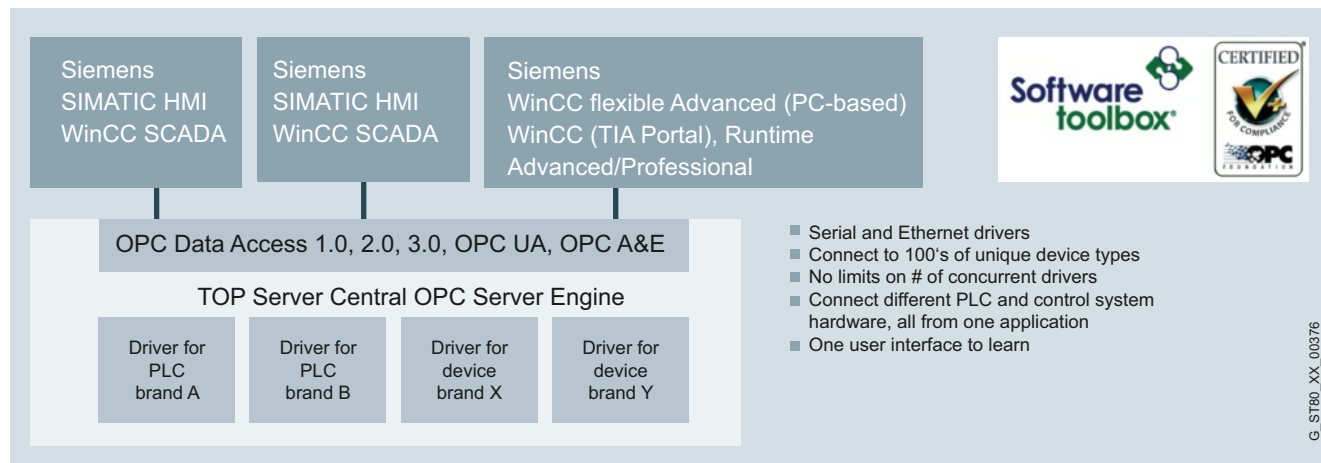
Phone: +49 (0)9131 746111
Fax: +49 (0)9131 744757

E-mail: info@it4industry.de

Additional information is available in the Internet at:

<http://www.siemens.de/opc>

Overview



TOP Server

TOP Server OPC Server – extended connectability for SIMATIC WinCC, WinCC flexible Advanced, WinCC (TIA Portal) and Runtime Advanced/Professional

The TOP Server OPC Server offer many diverse connection options for users, integrators, and OEMs of SIMATIC HMI such as WinCC SCADA or WinCC flexible Advanced (PC-based Runtime).

TOP Server is a proven OPC data integration platform with over 13,000 installations in more than 110 countries, including many successful applications with more than 100,000 tags.

Benefits

- Allows greater distances between WinCC and field devices
- Lower engineering and integration costs for non-Siemens hardware
- Low training costs since all drivers use the same interface
- Additional benefits when using WinCC as HMI/SCADA
- Winner of the Leverage Award thanks to the "Powered by Kepware" technology in combination with the experience, the support and the Siemens HMI/SCADA know-how of Software Toolbox

Simple configuration

- Point & click, configuration possible without programming expertise
- Includes instructions for WinCC Connectivity – can be connected like any OPC server
- Drag & drop copying of tags and devices
- Tag import/export
- Automatic tag database generation by device or by programming software
- Dynamic tag creation/direct addressing
- Support for changes during runtime
- Configuration password protection available

Connectivity

TOP Server

Function

Open, based on standards

- OPC interoperability tested in conjunction with WinCC, WinCC flexible, WinCC (TIA Portal), Runtime Advanced/Professional
- OPC Certified for OPC DA 2.05a & 3.0 and OPC UA
- Individual OPC interfaces to WinCC or WinCC flexible Advanced for multiple drivers
- Plug-in architecture for adding new device types easily
- Supports Windows XP, Vista, Windows 7, Windows 8, Server 2008, 2008 R2 and Server 2012, as well as Hyper-V and VMware virtualization

Flexible functions

- Mapping of OPC ProgIDs for easy substitution of alternate OPC servers
- Configurable user security policies provide variable access control even down to specific tags
- More than 100 serial and Ethernet device types are supported by more than 70 different drivers
- Suitable for parallel and multicore processor architectures
- Integrated support for serial Ethernet conversion/terminal server in order to make existing older hardware Internet-capable
- Telephone modems are supported by most serial drivers
- Comprehensive configuration options for many drivers for more flexibility in comparison to conventional HMI/SCADA drivers
- Redundancy support on the media and device level
- Innovative plug-in of tags

Troubleshooting and commissioning tools

- The OPC Quick Client Test Tool allows quick testing in the plant and in the laboratory
- The log diagnostics show all of the data transferred between TOP servers and devices. Sending of e-mails is possible. The data is identical to the data that can be recorded on-site.
- The OPC diagnostics aid in the quick solving of problems between the OPC client and server
- Log diagnostics data can be saved over an extended period for later analysis of transmission errors which occur in the absence of monitoring personnel

Functions for vertical industries

- The Oil & Gas Suite provides industry-specific drivers and functions
- The EFM Suite for exporting historical EFM data for Flow-Cal (for Gas and Liquids), Quorum PGAS, and generic CSV and ODBC formats
- The Building Automation Suite including BacNet
- The Power/Utilities Suite including IEC61850, DNP, Modbus, and others
- The IT&Infrastructure Suite including SNMP Agent & Master, Modbus, System Monitor, and others
- The General Manufacturing Suite with more than 50 drivers for the most commonly used control systems

Straightforward licensing

- Licensing by means of a software key, including license transfer utility. Also available via the Internet. Optional hardware key (extra charge).
- The license is valid per computer for an unlimited number of field devices, tags, or clients

TOP Server drivers list

- AB Bulletin 900 Temp Controllers
- AB Bulletin 1609 UPS
- ABB Totalflow serial
- AB/Rockwell Suite: AB DF1 Serial (Full & Half Duplex), AB DH+/DH-485, MicroLogix, PLC5, SLC5/05, ControlLogix, CompactLogix, Flexlogix Ethernet, including 1761-NET-ENI (np RS Linx required!)
- Advanced Simulator
- Alstom Redundant Ethernet
- Analog Devices 6B
- Aromat Serial & Ethernet
- Automation Direct Serial DirectNet, K-Sequence & Ethernet (ECOM & EBC)
- Bailey Fisher & PorterMicroDCI
- Bacnet
- Beckhoff TwinCAT Ethernet
- Bristol/IP Ethernet (BSAP)
- Busware Ethernet I/O
- Contrex CX1000 & M Series
- Custom Interface Driver (CID)
- Cutler Hammer D50/100 & ELC Ethernet
- Danfoss AKC55 Serial
- DataForth IsoLynx
- DDE Server to OPC Client Bridge (converts DDE Server to OPC)
- DeviceNetDNP 3.0 Suite - Serial + Ethernet
- Enron Modbus Serial
- Fisher ROC/ROC+, Serial + Ethernet
- Fuji Flex PLCs
- GE SRTP or EGD Ethernet & Focas1 Ethernet
- GE CCM, SNP & SNP-X Serial
- Honeywell UDC 3000/3300 & HC900
- Idec
- IEC61850 MMS Client
- Intelligent Actuator SuperSEL
- OPC Client Suite (accesses OPC DA, OPC UA and OPC XML-DA Servers)
- IoTech PointScan 100
- Krauss Maffei Ethernet (injection molding machines)
- Lufkin Modbus
- Mettler Toledo Scale serial
- Mitsubishi Suite: FX Programming Port & FX-Net, A/Q/QnA Series (Serial & Ethernet)
- Modbus Suite: Serial RTU & ASCII Master, Serial RTU Slave, Modbus Plus, TCP Ethernet Master/Slave & Bridging
- MT Connect client
- ODBC client driver (converts database data to OPC)
- Omni Flow Computer
- Omron Suite: Hostlink & FINS Serial, FINS Ethernet & Gateway, Temp. Controllers
- Optimization OptiLogic
- Opto 22
- Partlow ASCII
- Philips PC8/PC20
- PROFIBUS
- Red Prairie logistics transactions
- Sattbus & Sattbus Ethernet
- Scanivalve Ethernet

Function (continued)**TOP Server drivers list** (continued)

- Siemens S5 AS-511 & 3964R
- SIMATIC/TI 5x5 Ethernet or Serial
- SIMATIC/TI TIWAY Serial
- Sixnet Ethernet I/O
- SNMP Suite (SNMP & ping data to OPC)
- SquareD Serial
- System Monitor (converts any Windows performance counters to OPC)
- Telemecanique Unitelway
- Thermowestronics Data Acq. Systems
- Torque Tool Ethernet Driver
- Toyopuc PC2 Serial & PC2/PC3 Ethernet
- Toshiba Serial & Ethernet
- Triconex TSAA Ethernet
- Wago 750 Ethernet
- Weatherford 8500 Serial
- WITS Level 0 suite (Active/Passive)
- Wonderware InTouch Client driver
- Yaskawa Memobus, MP Serial+Ethernet
- Yokogawa Suite: DX100/200, DXP, & Darwin-Serial+Ethernet, YS100 Serial, HR2400 Serial, MW100 & MX100 Ethernet, CX Ethernet
- Yokogawa Green Series
- Wonderware InTouch Client driver

More information

A complete list of order data and prices, along with details of how the free test software may be obtained, can be found on the Internet under:

www.softwaretoolbox.com/siemenspremium

Or contact Software Toolbox by telephone or e-mail:

Software Toolbox Inc.
148 East Charles Street Suite A
Matthews, North Carolina, 28105
USA

Phone: +1 704 849 2773

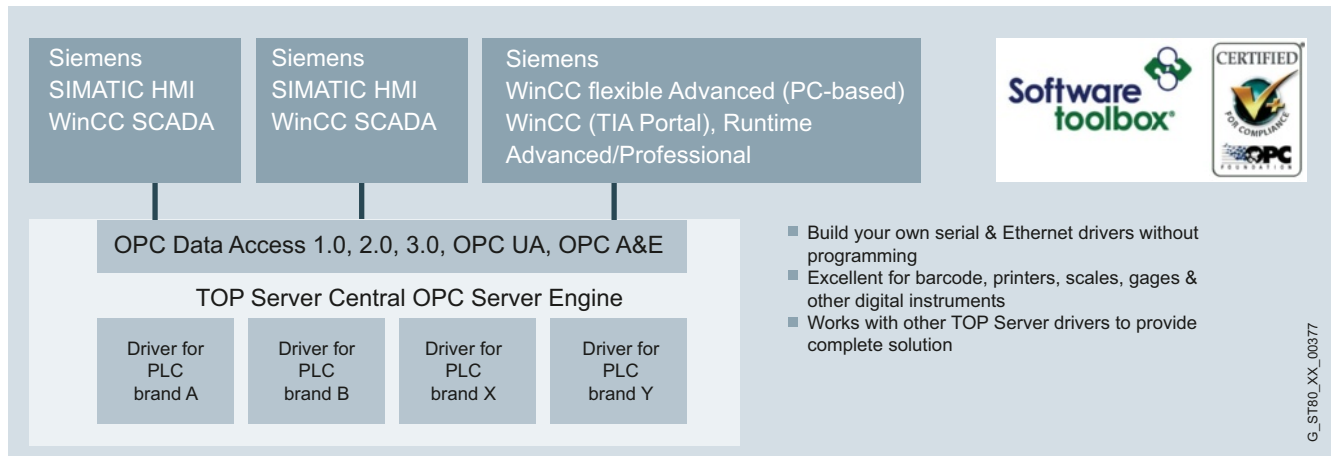
Fax: +1 704 849 6388

E-mail: siemenspremium@softwaretoolbox.com

Connectivity

TOP Server UCON

Overview



TOP Server UCON

TOP Server UCON: With point & click, you can create your own WinCC drivers for serial and Ethernet field devices

Although WinCC already offers a wide range of drivers, there are thousands of serial and Ethernet field devices for which no ready-to-use drivers for integration with SIMATIC HMI software are provided.

In such situations, you yourself could program a driver, which would quickly cost a few thousand euros. However, the TOP Server UCON OPC server represents a proven alternative for this, which can be used to create your own suitable drivers without any programming and at a fraction of the cost.

Benefits

- Expanded coupling options of WinCC with field devices
- Reduced engineering and integration cost
- Additional benefits when using WinCC as HMI/SCADA

UCON provides point-click configurations for the following devices:

- Barcode scanners and printers
- Micrometers
- Scales
- Controllers
- Laboratory devices
- Recorders
- Sensors
- Analyzers
- Special devices
- Serial RS232/422/485 devices
- TCP/IP or UDP Ethernet devices

Function

- OPC compatibility tested in conjunction with WinCC, WinCC (TIA Portal), Runtime Advanced/Professional
- OPC conformity tested for OPC DA 2.05a & 3.0 and OPC UA
- Point & Click, menu-driven configuration – no programming required
- Free online training videos
- A user-friendly Transaction Editor guides the project engineer through the read/write interface of the field device and aids in the selection and assignment of data to the OPC tags
- Sample logs are provided
- Supports solicited and unsolicited messages
- Works with modems and encapsulated Ethernet devices
- Diagnosis of raw data flow to and from the data source
- Multi-threading
- More than 256 simultaneous serial or Ethernet connections
- Adjustable timeouts and write optimizations
- Supports Windows XP, Vista, Windows 7, Windows 8, Server 2008, 2008 R2 and Server 2012, as well as Hyper-V and VMware virtualization

More information

Software Toolbox Inc.
148 East Charles Street Suite A
Matthews, North Carolina, 28105
USA

Phone: +1 704 849 2773

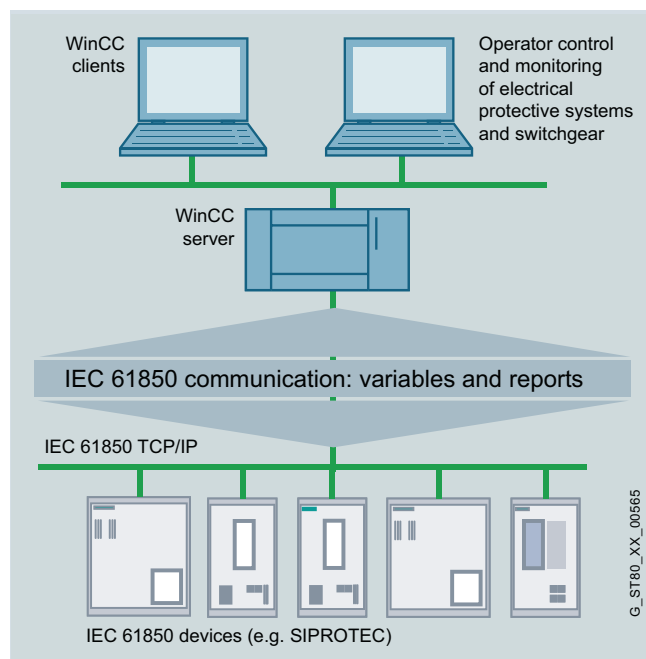
Fax: +1 704 849 6388

E-mail: siemenspremium@softwaretoolbox.com

Additional information on TOP Server UCON as well as a free test software version is available in the Internet at:

www.softwaretoolbox.com/siemenspremium

Overview



IEC 61850 communication channel

IEC 61850 is the globally valid standard for communication in electrical protective systems and medium-voltage switchgear. All leading manufacturers have therefore already implemented IEC 61850 in their control and protective equipment.

The open standard means simpler configuration, compatibility with future expansions, lower maintenance costs, and thus lower life cycle costs.

The communication channel makes it possible to operate and monitor IEC 61850-enabled devices with WinCC. This means the automation of a production plant can be expanded by the addition of support for IEC 61850 devices for the electrical system.

Benefits

- Simple integration of electrical devices of the high-voltage and medium-voltage level into the SIMATIC HMI world
- A SIMATIC system for production plant and electrical system
- Security of investment thanks to globally valid IEC 61850 standard
- Powerful communication
- Simple configuration and expandability

Function

Configuration

The wizard included in the scope of delivery is used to configure data communication via IEC 61850 with an IED (intelligent electric device). It provides the option of importing the configuration file (icd file) of the device. Alternatively, the wizard can also access the device online and upload the current configuration. The tags and alarms selected by the user are then transferred to the WinCC data management system.

Communication

The IEC 61850 communication channel is an IEC 61850 MMS client. It establishes a connection to each of the configured IEC 61850 MMS server devices. This enables read/write data communication with the devices. Buffered reports continue to be supported: Status changes reported by the device are inserted with time stamp in the WinCC Alarm Logging system.

Diagnostics data

The accompanying values to measured values of the control and protective equipment, such as quality codes, are transferred in the same way as diagnostics information on the connection status to each device. This guarantees detailed communication diagnostics.

Functionality

The communication channel enables data exchange with IEC 61850 devices. The SICAM PAS solution package is available for automation tasks or for connecting devices and control centers.

Ordering data

Article No.

WinCC channel
WinCC channel IEC 61850 MMS client, license for server WinCC V7.0 and higher for communication with IEC61850 devices, USB Dongle

9AE4110-7AA00

More information

Siemens AG
Industry Sector
Customer Services
Division Value Services
Karlsruhe

Phone: +49 721 595-6380

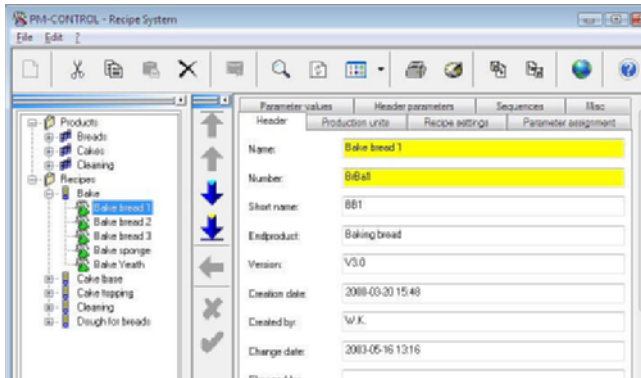
Fax: +49 721 595-6383

E-mail: function.blocks.industry@siemens.com

Process Management

PM-CONTROL system software

Overview



PM-CONTROL system software

With PM-CONTROL, the user has flexible parameter control at his disposal, with an operator interface that can be seamlessly integrated into the WinCC user interface. Setpoints can be transferred to WinCC, PCS7 and also via OPC/DA, even if a recipe contains setpoints for several of these targets in combination.

The recording of recipe changes in an audit trail and the support of electronic signatures make PM-CONTROL the ideal tool in the regulated industry.

The integrated, central engineering library PM-LIBRARY allows finished configurations to be exchanged and re-used.

Function

Integral "wizards" provide the user with the best possible support for operator control and reduce training time to an absolute minimum. Configurable test rules ensure the consistency of the recipe data. Recipe values can also be calculated on the basis of other recipe values, task values, or current measured values. An overview of the preliminary run times of the planned tasks can be seamlessly integrated into the WinCC user interface.

For simple and even complex tasks, PM-CONTROL is offered either with a user-friendly task scheduling and automatic transfer of the planned tasks or with manual planning and direct call-up of the recipes. The openness of PM-CONTROL enables problem-free connection to higher-level host systems (e.g. MRP systems) at the plant and production management level.

Ordering data

Article No.

PM-CONTROL system software type S version "Compact"

9AE7110-2SS10-1AA0

Single-user/multi-user system server that runs on interconnected WinCC system and comprises a topology manager, recipe system and ActiveX Control for recipe pre-selection (several autonomous production units)

PM-CONTROL system software type S version "Standard"

9AE7110-2SS20-1AA0

Single-user/multi-user system server that runs on interconnected WinCC system and comprises a topology manager, recipe system and job control (one production unit)

PM-CONTROL system software type S version "Professional"

9AE7110-2SS30-1AA0

Single-user/multi-user system server that runs on interconnected WinCC system and comprises a topology manager, recipe system and job control (several autonomous and concatenated production units)

PM-CONTROL system software type C1

9AE7110-4SC01-1AA0

Multi-user system client that runs with system package Type S (Compact, Standard, Professional) on an interconnected WinCC system or as thin client (without WinCC) with recipe system and job control

Note:

Additional PM-CONTROL configurations available on request.

More information

Siemens AG
Industrial Solutions and Services
WinCC Competence Center Mannheim

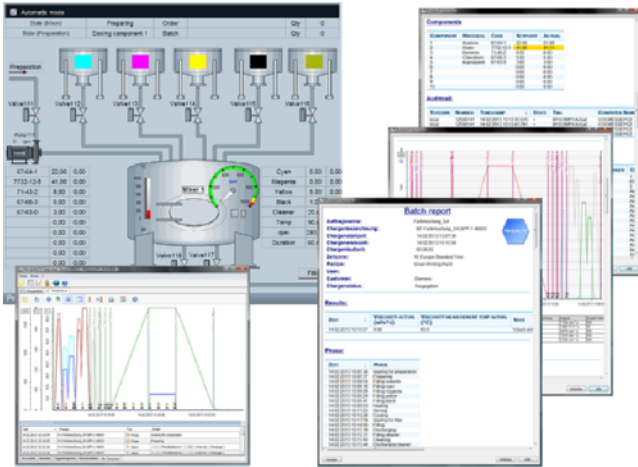
Phone: +49 (0)621 456-3269
Fax: +49 (0)621 456-3334

E-mail: WinCCAddon.automation@siemens.com

Additional information is available in the Internet at:

www.siemens.com/process-management

Overview



PM-QUALITY system software

The strengths of PM-QUALITY are the complete recording, processing and archiving of batch/job-related data such as trends, messages, production setpoints and actual production values, audit trails and laboratory values as an integral part of a comprehensive quality management system.

This allows WinCC, PCS7 and WinCC RT Professional (TIA Portal) data from a variety of sources to be combined via text import or OPC/DA, merged into meaningful reports, and stored in long-term archives.

PM-QUALITY ensures the required level of transparency both if seamlessly integrated into the WinCC, PCS7 or WinCC RT Professional (TIA Portal) user interface or as a separate office application.

Function

The display of trends in which even several batch sequences can be compared becomes a comprehensive analysis tool with maximum operating convenience thanks to the simultaneous display of alarms, triggered recordings of measured values, phase lines, and comments.

Reports can be found in seconds thanks to individually configurable filters. With the integrated Report Layout Editor, different views of the batch archives can be conveniently implemented, conformant to existing design guidelines.

The integrated, central engineering library PM-LIBRARY allows the exchange and re-use of finished configurations.

The processing of measured values with the aid of graphical calculation rules, the integration of day, week and shift logs with an integrated shift calendar, and the creating of reports in Microsoft Excel are consistent expansions of the proven functionality of PM-QUALITY.

Ordering data

Article No.

PM-QUALITY system software type S version "Standard"

9AE7111-2SS20-1AA0

Single-user/multi-user system server that runs on an interconnected WinCC system for one production unit

PM-QUALITY system software type S version "Professional"

9AE7111-2SS30-1AA0

Single-user/multi-user system server that runs on an interconnected WinCC system for several autonomous and concatenated production units

PM-QUALITY system software type C

9AE7111-4SC01-1AA0

Multi-user system client that runs with system package Type S on an interconnected WinCC system or as thin client (without WinCC)

Note:

Additional PM-QUALITY configurations available on request.

More information

Siemens AG
Industrial Solutions and Services
WinCC Competence Center Mannheim

Phone: +49 (0)621 456-3269
Fax: +49 (0)621 456-3334

E-mail: WinCCAddon.automation@siemens.com

Additional information is available in the Internet at:

www.siemens.com/process-management

Sector products

7KM PAC3200 library for SIMATIC WinCC

Overview

The 7KM PAC3200 library for SIMATIC WinCC is a block library for the measuring instruments 7KM PAC3200 and 7KM PAC4200. It permits the seamless integration of measuring instruments in WinCC.

The 7KM PAC3200 library for SIMATIC WinCC comprises a driver block, a diagnostics block, and the faceplates. Blocks in the SIMATIC S7 supply the faceplates on the user interface of WinCC with energy data, generate messages, and ensure connection to the alarm logging of WinCC.

Faceplates

The faceplates serve as a user interface for operator control and monitoring and permit the display and operation of technologically important values and functions of the 7KM PAC3200/4200 measuring instrument in WinCC.

Between the faceplates and the blocks and also between the blocks and the 7KM PAC3200/4200 measuring instruments, there are bi-directional communication connections on the system side, which support the display of values in the faceplates and the forwarding of entries to the device. This makes the 7KM PAC3200/4200 measuring instruments an integral part of WinCC.

System requirements

The Library 7KM PAC3200 for SIMATIC WinCC is released for WinCC V7.0.

The WinCC options AS-OS Engineering and Basic Process Control must be installed. The block library is available for S7-300, S7-400, and WinAC RTX.

At least one S7 CPU317-2DP is required for implementation with S7-300. At least one S7 CPU414-2 is required for implementation with S7-400.

The same operating systems as for SIMATIC WinCC are supported.

Benefits

- Total integration of the 7KM PAC3200/4200 measuring instruments in SIMATIC WinCC over PROFIBUS DPV1. The library is a certified WinCC option.
- Read-out and display of device data
- Input of limits for monitoring by the driver block
- Resetting of values on the device (min./max. values)

Application

The 7KM PAC3200 library for SIMATIC WinCC is used in all industries where WinCC is used. Pre-defined blocks and symbols assure that the user is using tested and certified product components.

In addition to the cyclic connection, there is also an acyclic connection for pure visualization tasks. With the acyclic connection, the process image of the SIMATIC CPUs can be used more efficiently.

Ordering data

Article No.

Library 7KM PAC3200 for SIMATIC WinCC ¹⁾

- Engineering license
 - For operation on a WinCC OS (single-user workstation or server) and an automation system (AS)
 - When additional WinCC OS are used, an engineering license is required for each WinCC OS
- Runtime license
 - For operating on an additional AS

3ZS2791-1CC11-0YG0

3ZS2791-1CC10-6YH0

Library 7KM PAC3200 for SIMATIC PCS 7 ¹⁾

- Engineering license
 - For operation on a PCS 7 OS (single-user workstation or server) and an automation system (AS)
 - When additional PCS 7 OS are used, an engineering license is required for each PCS 7 OS
- Runtime license
 - For operating on an additional AS

3ZS2781-1CC11-0YG0

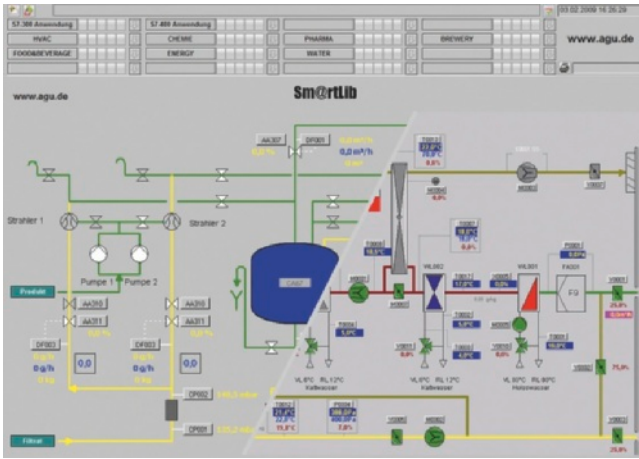
3ZS2781-1CC10-6YH0

¹⁾ Can also be used for 7KM PAC4200

You can find the currently supported SIMATIC WinCC versions on the Internet at:

<http://support.automation.siemens.com>

Overview

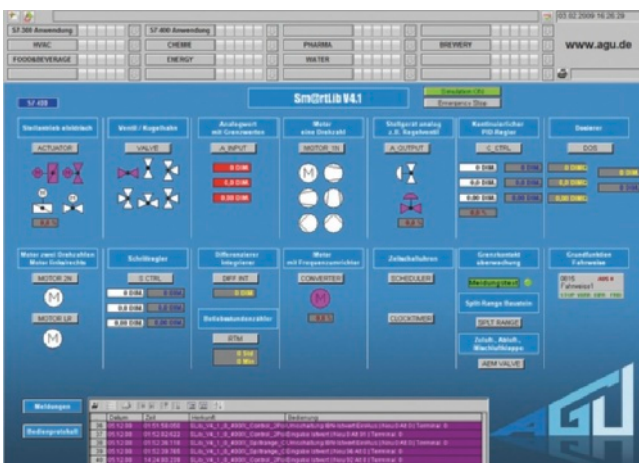


The function library SmartLib is a cross-sector library; it is used in particular for configuring automation and process control systems in the HVAC, process industry, pharmaceuticals and energy sectors.

SmartLib was developed for the target systems of WinCC and WinCC flexible in combination with S7-300 or S7-400 controllers.

The library contains all the control functions demanded in the process industry and in building management systems. SmartLib supports the alarm processing of the systems by transferring the alarms complete with real time stamps. Operator interventions are entered in the alarm system with previous value, new value and user name.

Users can adapt the screen icons to their requirements. The library contains function blocks for the S7 controllers, and the faceplates and icons for WinCC and WinCC flexible (option).



Benefits

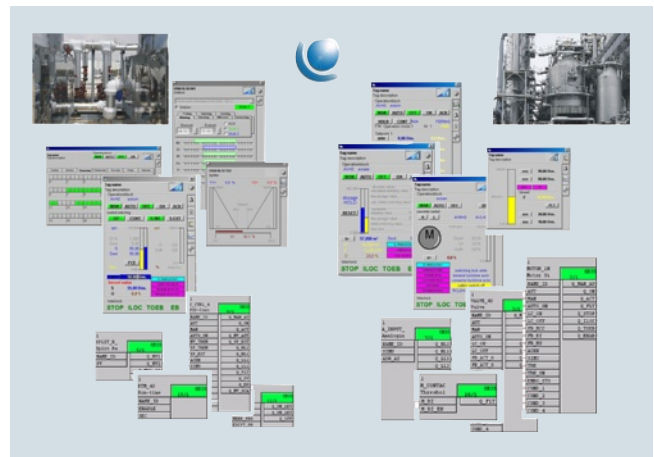
SmartLib impresses customers with efficient, quickly learned engineering Menus guide the operator. The clear documentation is available in Simatic Manager (online help) and an up-to-date version is always available on the Internet.

You can combine WinCC and WinCC flexible systems with SmartLib and obtain uniform user interfaces and alarm systems. WinCC flexible operations are, for example, logged in WinCC.

With SmartLib, complex tasks can easily be configured without the need for in-depth programming knowledge. SmartLib reduces the costs in the configuration and qualification phase. The integrated simulation function supports quick testing of the software without the system.

The library has been used by well-known companies for a number of years and is defined as a standard.

The comprehensive functions of SmartLib guarantee the user a broad range of implementation possibilities, also in international projects (multi-language capability).



The following functions are available:

- Continuous closed-loop control, sequence control
- Split range
- Dosing unit, summing unit
- Motor 1N, Motor 2N, Motor LR
- Converter
- Valve, actuator, damper block
- Limit contact, limit
- Analog input, analog output
- hx diagram, heating trend, dewpoint
- Timer block: Schedule, timer
- Hour meter
- Infeed valve, mixed-air valve and exhaust valve
- Basic function master

Sector products

SmartLib function library

Design

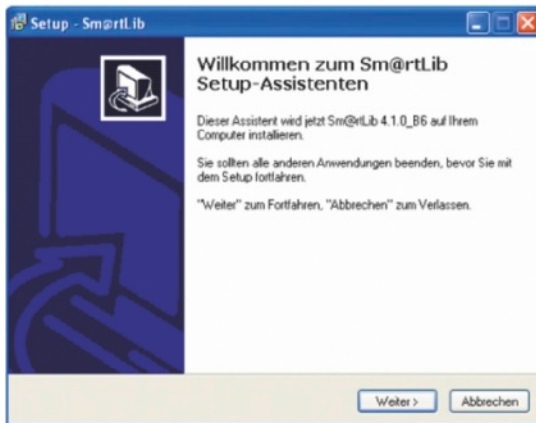
Licensing

Licenses are required in accordance with the number of programmable controllers or operator panels (for WinCC flexible only).

There are no limits to its use within WinCC.

Design

SmartLib can easily be installed in the existing installation of S7 and WinCC. The setup wizard guides the user through the installation process. The library comprises blocks for S7 and screen components for the WinCC and WinCC flexible user-interface.



More information

AGU Planungsgesellschaft mbH
Mr. Harry Voges

Von-Ketteler-Straße 1
51371 LEVERKUSEN
GERMANY

Phone: +49 (0)214 8686011
Fax: + 49 (0)214 8686019

E-mail: voges@agu.de

Additional information is available on the Internet at:

www.agu.de

Up-to-date information on SmartLib can be found on the Internet at:

<http://smartlib.agu.de>

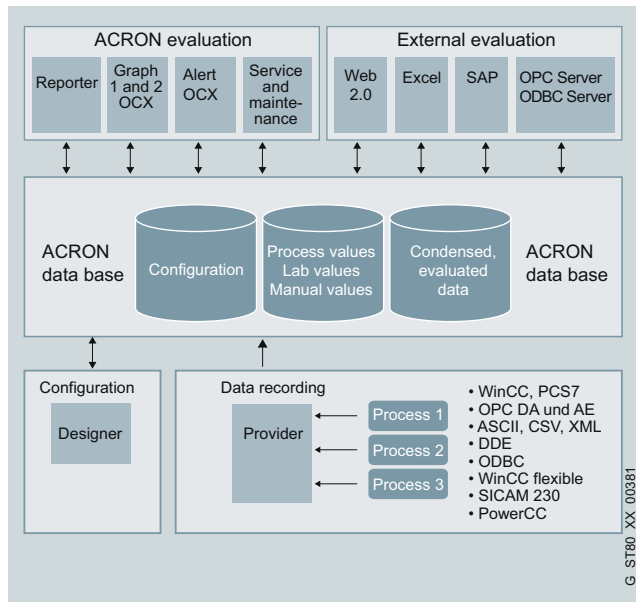
Function

The essential functions of SmartLib HVAC include:

- Easy configuring thanks to operator guidance in WinCC
- Can be used for WinCC and WinCC flexible with seamless operation between the two systems
- Operation possible from CPU 314
- Suitable for use in S7-300 and S7-400
- Multi-language capability (English, German, etc.)
- Control system alarm processing
- Complete user alarms with presentation of old value and new value with user name
- Suitable for use with STL, FBD or CFC diagrams
- Automatic generation of tags is supported (OS translation)
- Open interface for connecting other operator stations (non-Siemens panels)
- Icons can be adapted
- Clear documentation is available in SIMATIC Manager and up-to-date on the Internet
- Online Help for every block
- Example project is available in the Internet

Overview

ACRON on the basis of WinCC covers all requirements of historical data processing in the water/wastewater, environment and energy areas, from the smallest applications right up to large distributed systems.



The following ACRON modules are available:

- **Provider**
Supports data acquisition from any sources
- **Reporter**
The convenient user interface of ACRON
- **Graph**
Characterized by convenient and user-friendly representation in trend curves
- **AC Job**
Management module for all automatic printout and e-mail distribution of reports
- **Error and maintenance module**
ACRON tool for creating all the necessary error and alarm reports and their comprehensive statistics
- **PDCA module (Plan DO Check_Act)**
- **Energy data management in accordance with ISO 50001**
- **Excel Add-In**
Convenient access to all data in ACRON for simple and fastreading in of the values

Benefits

ACRON on the basis of WinCC has a rugged and fault-tolerant client-server architecture. The software is scalable and can keep pace with requirements. ACRON for WinCC is also characterized by ease of use, flexibility and simple configuring.

Other features include:

- High performance and extremely fast response times
- Time-oriented and/or change-oriented recording
- Time resolution in the millisecond range
- Up to 8-fold database redundancy
- Arithmetic operations with more than 100 000 data points
- Maximum security in data acquisition (three-level cache)
- Manual or automatic data backup to different data carriers/media
- Detailed breakdown for user administration
- Low memory requirements
- All reports possible (including batch or shift-related)
- Quick configuration
- Web-enabled (new Web front end)
- Languages with switchover function: German, English, French, Spanish, Italian, and others on request
- Runs under Windows XP, 2003/2008 Server, Vista and Windows 7 (64-bit)
- ISO 50001 TÜV-certified, M260, M207, 216A, GMP, 21cfr11, BlmSchV, TA air, NWBA, etc.

Sector products

ACRON for WinCC-PCS 7

Function

Reporting



ACRON for WINCC/PCS 7, reports

ACRON for WinCC creates informative reports from the process data over freely selectable time ranges. Useful compression algorithms generate data for daily, weekly, monthly, and annual reports, as well as freely selectable time periods.

Event or batch reports are determined by start and end conditions. There are also reports and application examples available from different sectors.

The report wizard supports fast generation even of complex reports, and reduces the configuring time.

More information

Videc GmbH
Mr. Dieter Barelmann
Osterdeich 108

28205 Bremen, GERMANY

Phone: +49 (0)421 339050-0

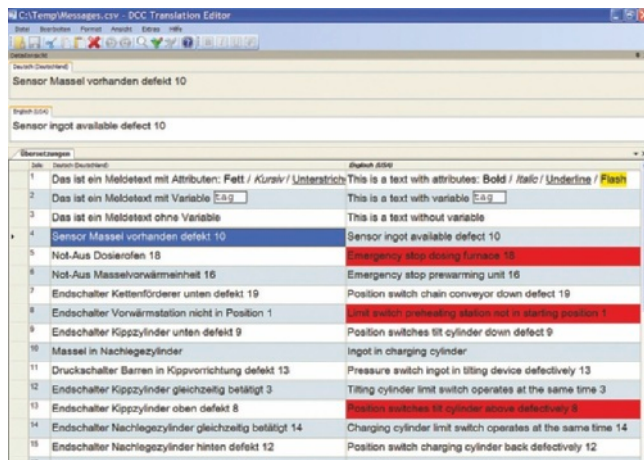
Fax: +49 (0)421 3379561

E-mail: info@videc.de or info@acron7.de

Additional information is available in the Internet at:

www.acron7.com

Overview



DCC Translation Editor

The DCC Translation Editor 4.2 SIMATIC Edition is the only professional translation tool that is specialized in the convenient and efficient modification and maintenance of multilingual SIMATIC configurations. With the aid of this tool, the user can handle the translations in all of the languages for WinCC (TIAPortal) V11 or V12 just as problem-free as for all of the other standard WinCC and WinCC flexible versions.

Benefits

The advantages of DCC Translation Editor 4.2

Increased quality and significantly reduced overhead for the multilingual capability.

Safeguarding of formats

The structure and formats of the export files remain unchanged during the translation process. Headers, rows, tags and the source language are protected against deletion. The configuring engineer can then import the results of the translation into the WinCC project without problems. Thanks to automatic reading and writing of the export files at the press of a button, there is no need for error-prone conversion and time-consuming reconfiguring of computer settings.

Efficiency

Translation Editor 4.2 enables the following:

- Efficient translation outside the configuring thanks to full data format handling
- Simple integration into the process visualization system thanks to marking of translations that are too long
- Identification of translation errors, incorrect numbers, and missing punctuation marks (quality assurance)
- Automatic machine translation of all configuring texts

Advantage:

- Verifiable increase in quality
- Less need for adaptation in the configuration
- Less time-consuming correction loops

Flexibility

Translation Editor 4.2 edits all of the languages without restrictions on project size.

Universal use

The translation tool has been consistently internationalized. It runs on all Microsoft operating systems, and in all languages.

Long-term security

The DCC Translation Editor 4.2 supports translations for TIA, WinCC and WinCC flexible, and it is updated continuously.

Function

Innovative features in version 4.2

- Text length check
 - Marking of translations that are too long
- Quality assurance at the press of a button: Checking of
 - Numbers
 - Characters
 - Words
 - Consistency
 - Completeness
- Automatic translation
 - Integration of Microsoft Bing & Google Translate

Standard interfaces/releases

for reading and writing the text files (csv, xls) from:

- WinCC (5.x to 7)
- WinCC flexible (2005 to 2008)
- WinCC (TIA Portal) V11, V12
- STEP 7 Basic
- Compatible with XP, Vista, 7 (32 and 64 Bit)

Available languages

- Source and target languages: all languages possible

Quality assurance

- Display of translations that are too long:
 - Settable text length limit
- Spell check:
 - Dictionaries for 70 languages can be linked in
- Matching filters for translations, numbers, characters and words

Automatic translation suggestions

- Translation of empty texts or all texts with Microsoft Bing or Google Translate

Formatting, character input

- Visible text formats: bold, italic, underscored, flashing
- Tags can be moved within the field but cannot be deleted

Safety

- Deletion protection for headers, lines, tags, and source language
- The source file is secured on first opening
- Automatic 10-fold backup

More information

DCC GmbH
Plathnerstrasse 5 A
30175 Hannover

Phone: +49 (0)511 336 448-0
Fax: +49 (0)511 336 448-19

E-mail: info@dcc-global.de

Further information and a test version for downloading can be found on the Internet at:

www.dcc-global.com/TE

Diagnostics and maintenance

Alarm Control Center ACC

Overview

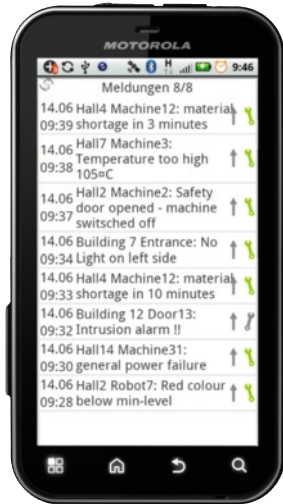
An instant response!

Alarm Control Center – Fast and reliable alarms in the event of faults

In modern operator control and monitoring systems, fast and reliable signaling of fault states to the appropriate personnel is becoming increasingly important.

The modular alarm management system "Alarm Control Center" meets these requirements by sending WinCC error messages fully automatically to a host of possible recipients, e.g:

- Text message to smartphone and mobile phone
- Pager
- Voice output to telephone
- HiPath / Hicom telephones
- E-mail



The various versions of the Alarm Control Center and the options available permit individual adaptation to user requirements, ranging from stand-alone solutions up to company-wide communications solutions.

Function

- Various communication media are optionally supported (text messages via GSM terminal with acknowledge capability, pager (Ascom/FunkTel), voice output (Wav and TextToSpeech), text output on HiPath/Hicom telephones, email, etc.)
- Integrated shift and personnel management for time dependent delivery of messages to different persons
- Extensive escalation system for reliable delivery of messages even when individual recipients cannot be reached
- Operation and configuration throughout the network thanks to Web capability

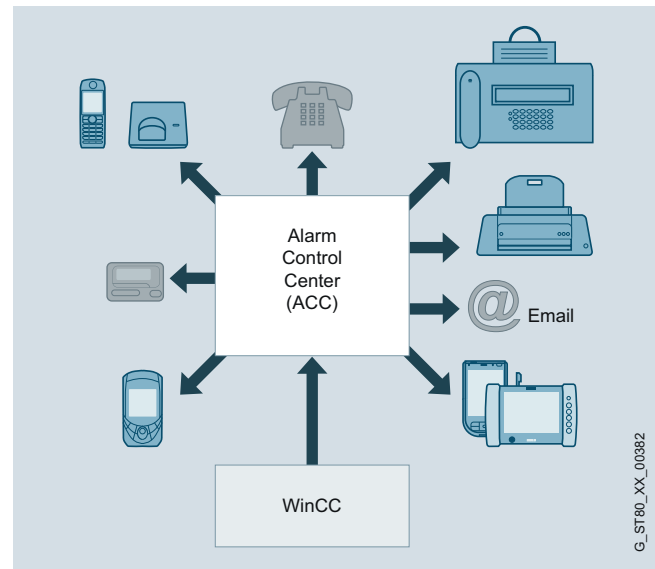
Options

- Redundancy option for high availability systems
- Alarm filter options for suppressing message bursts, follow-on messages, and chatter messages
- App option for smartphones for easy acknowledgement of messages and displaying the message status
- System monitoring option for monitoring the alerting functions by means of cyclic testing of the software and hardware components
- Change journal option for logging the changes to the configuration such as changing the call number, re-organizing the callsequence
- Dialog module option for integrating customer-specific functions
- Conference option for setting up a teleconference for up to 10 participants
- Emergency call option for forwarding an emergency call to upto 10 participants
- Personnel monitoring option for safeguarding personnel whowork alone in hazardous areas

Ordering data	Article No.
Alarm Control Center „Basic Edition“ For connecting to one WinCC system	9AE4310-3BS01
Alarm Control Center „Professional Edition“ For connecting to several WinCC systems	9AE4310-3BS02
Alarm Control Center „Enterprise Edition“ Fault-tolerant system for connecting to several WinCC systems	9AE4310-3BS03
WinCC remote connection with Alarm Control Center (Professional and Enterprise Edition only) Anbindung eines/mehrerer WinCC-Systeme über LAN an Alarm Control Center	9AE4310-3PW02
Alarm Control Center transmitter channel „Text message via GSM modem“ To directly send short messages in the GSM network with acknowledgement capability (hardware included)	9AE4310-3FG10
Alarm Control Center transmitter channel "Voice output (WAV files)" For outputting voice messages to any telephone	9AE4310-3FV10
Alarm Control Center transmitter channel "E-mail" For sending messages by e-mail (SMTP)	9AE4310-3FE10

Note:

Other configurations and options available under the Internet.

**More information**

Siemens AG
GER Industry Customer Services
WinCC und Alarm Management Competence Center Stuttgart
70049 Stuttgart, Germany

Phone: +49 (0)71162 007 69-0

Fax: +49 (0)71162 007 69-9

E-mail: sales@alarmcontrolcenter.de

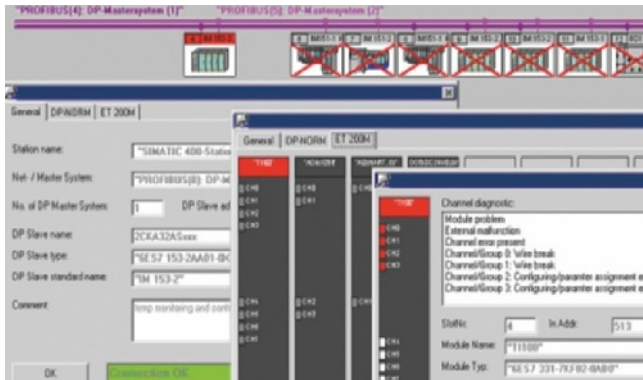
Additional information is available in the Internet at:

www.alarmcontrolcenter.de

Diagnostics and maintenance

PROFIBUS DP/PA system diagnostics

Overview



PROFIBUS DP/PA system diagnostics

The operator in the control center requires not only extensive information about the automated process, but also information about the status of the instrumentation and control technology.

With the SIMATIC WinCC add-on for status display and diagnostics of PROFIBUS slaves (redundant/non-redundant), the essential properties of all PROFIBUS DP/PA devices configured in the SIMATIC system can be diagnosed and displayed on an operator station. PROFIBUS masters here are either the standard automation systems SIMATIC S7-300/400 or fault-tolerant automation systems of the SIMATIC S7-400.

The add-on comprises up to 5 STEP 7 blocks and one ActiveX-control (faceplate). The STEP 7 blocks record the information of the configured master system and send the data to the operator system. The faceplate shows an overview of the PROFIBUS DP line already configured in STEP 7 complete with all DP stations. There the following detailed views can be called up:

- Overview and status display of the connected PROFIBUS PA slaves
- Overview of the devices on a Y link
- DP standard diagnostic information for all PROFIBUS DP slaves
- Configuration data from AS-Engineering (e.g. order no., function or location designation)
- Topology display (possible when using a diagnostics repeater)

Benefits

- Online diagnostics independent of any engineering tools
- All PROFIBUS DP/PA slaves known in SIMATIC STEP 7 can be visualized
- All relevant information about configured PROFIBUS slaves is available – quickly and reliably
- Diagnosing of diagnostics repeaters and slaves downstream of the diagnostics repeaters
- A few simple configuring steps
- Use of configuration data created by SIMATIC STEP 7 as standard during configuration (export of hardware configuration)
- Simple tracking of changes in the hardware configuration – online and at all times
- Users can import new PROFIBUS DP devices themselves
- Users can change diagnostic texts and color schemes at anytime in the ActiveX object
- Diagnostic buffer to save error messages that occur

Function

System diagnostics consists of supplied diagnostic blocks that send the relevant information to the system diagnostics control. With the exported hardware configuration from STEP 7, the operational states of the connected I/O devices can be read out and visualized.

An S7-400, S7-300, or TDC serves as basic system. Depending on the connected I/O, PROFIBUS slaves or PROFINET IO devices are monitored and their status is displayed.

Additional functions of the PROFIBUS DP/PA slave diagnostics

- Overview of the connected PROFIBUS PA master systems
- Overview of the devices on a Y link
- Detailed diagnostic information on the DP slaves: e.g. module status, detailed diagnostics, channel diagnostics, order number, function designation or location designation, etc.
- Monitoring of redundant PROFIBUS master systems
- Diagnostics scope is scalable as required using STEP 7 blocks

Additional functions of PROFINET IO Device diagnostics

- Diagnostic information from Scalance components
- Overview of PROFINET devices connected to the WLAN link (including current module state)
- Overview of PROFIBUS slaves connected to the IE/PB link (including current module state)
- Diagnostics scope is scalable as required using STEP 7 blocks

Additional functions of S7-300/S7-400 CPU diagnostics

- Display of CPU status (via LEDs)
- Diagnosis of the most important CPU properties
- Scope of services: S7-300, S7-400, and S7-400H

Ordering data

Article No.

System diagnostics for

• S7-300/-400 CPU	2XV9450-1SD08
• PROFINET IO device diagnostics	2XV9450-1SD10
• PROFIBUS DP/PA Slaves for TDC	2XV9450-1SD11
• PROFIBUS DP/PA slaves	2XV9450-1SD12

Note:

Single License for 1 installation, 2 languages (English, German); further languages can be configured by the user. Runtime software and electronic documentation on CD-ROM. According to the system requirements of WinCC V6 to V7

More information

Siemens AG
Industry Sector Industry Automation Division
IT4 Industry Customer Support
Werner-von-Siemens-Straße 60

91052 Erlangen, Germany

Phone: +49 (0)91 31 7-461 11

Fax: +49 (0)9131 7-447 57

E-mail: info@it4industry.de

Additional information is available in the Internet at:

www.siemens.de/systemdiagnose

Overview

Date	Date Number	Name	Object Number	Object Desc	Interval	Status	Last Date	Obs	Obs	Last Date	Remaining Obs	Remaining Obs
	PLC790	PLC790	81	200 800								
	PLC792	PLC792	81	200 800								
	PLC728	PLC728	104	40%	PLC728							
	PLC701	PLC701	104	40%	PLC701							
	PLC702	PLC702	104	40%	PLC702							
	PLC703	PLC703	104	40%	PLC703							
	PLC704	PLC704	104	40%	PLC704							
	PLC705	PLC705	104	40%	PLC705							
	PLC706	PLC706	104	40%	PLC706							
	PLC707	PLC707	104	40%	PLC707							
	PLC708	PLC708	104	40%	PLC708							
	PLC709	PLC709	104	40%	PLC709							
	PLC710	PLC710	104	40%	PLC710							
	PLC711	PLC711	104	40%	PLC711							
	PLC712	PLC712	104	40%	PLC712							
	PLC713	PLC713	104	40%	PLC713							
	PLC714	PLC714	104	40%	PLC714							
	PLC715	PLC715	104	40%	PLC715							
	PLC716	PLC716	104	40%	PLC716							
	PLC717	PLC717	104	40%	PLC717							
	PLC718	PLC718	104	40%	PLC718							
	PLC719	PLC719	104	40%	PLC719							
	PLC720	PLC720	104	40%	PLC720							
	PLC721	PLC721	104	40%	PLC721							
	PLC722	PLC722	104	40%	PLC722							
	PLC723	PLC723	104	40%	PLC723							
	PLC724	PLC724	104	40%	PLC724							
	PLC725	PLC725	104	40%	PLC725							
	PLC726	PLC726	104	40%	PLC726							
	PLC727	PLC727	104	40%	PLC727							
	PLC728	PLC728	104	40%	PLC728							
	PLC729	PLC729	104	40%	PLC729							
	PLC730	PLC730	104	40%	PLC730							

PM-MAINT system software

PM-MAINT is an industry-neutral maintenance management system for use at the production level. By providing various connection options to the existing automation landscape, PM-MAINT allows besides purely calendar-based planning also a performance-based planning that is based on real machine run-times and machining cycles.

PM-MAINT also supports maintenance efforts in the recording and complete documentation of unplanned repairs by means of easy and comprehensible work sequences and a high level of user-friendliness.

Maintenance information calculated by PM-MAINT such as recommended maintenance dates can be displayed in the existing operating screens due to the integration of the automation technology. Repair requests can easily be created directly by the machine operator.

Function

The innovative user interface permits easy access to all maintenance-relevant information.

Due to the user-friendly selection and filter options in the various views, you can quickly localize your core areas. Required actions, personnel, material, as well as special instructions are bundled in a task, which is reported back in accordance with the status of the actions.

All of the operating actions in PM-MAINT are saved in a long-term archive.

The web technology http can also be used for the communication of the PM-MAINT clients.

Ordering data

PM-MAINT system software type S

Single-user/multi-user system server that runs on an interconnected WinCC system

PM-MAINT system software type C

Multi-user system client that runs with system package Type S on an interconnected WinCC system or as thin client (without WinCC)

Article No.

9AE7104-2SS30-1AA0

9AE7104-4SC00-1AA0

Note:

Additional PM-MAINT configurations available on request.

More information

Siemens AG
Industrial Solutions and Services
WinCC Competence Center Mannheim

Phone: +49 (0)621 456-3269
Fax: +49 (0)621 456-3334

E-mail: WinCCAddon.automation@siemens.com

Additional information is available in the Internet at:

www.siemens.com/process-management

Diagnostics and maintenance

PM-ANALYZE system software

Overview

Period	From	To	Area	Alarm Count	Percentage
01	19.11.2012 00:00	20.11.2012 00:00		329	0.82%
02	19.11.2012 00:00	20.11.2012 00:00	Hour1	129	0.64%
03	19.11.2012 00:00	20.11.2012 00:00	Hour2	893	0.81%
04	19.11.2012 00:00	20.11.2012 00:00	Preparation	374	0.88%
05	20.11.2012 00:00	21.11.2012 00:00		6389	5.62%
06	20.11.2012 00:00	21.11.2012 00:00	Hour1	7949	6.82%
07	20.11.2012 00:00	21.11.2012 00:00	Hour2	7724	6.81%
08	20.11.2012 00:00	21.11.2012 00:00	Preparation	17895	15.54%
09	21.11.2012 00:00	22.11.2012 00:00		2648	2.59%
10	21.11.2012 00:00	22.11.2012 00:00	Hour1	2815	2.58%
11	21.11.2012 00:00	22.11.2012 00:00	Hour2	2702	2.38%
12	21.11.2012 00:00	22.11.2012 00:00	Preparation	4889	3.95%
13	22.11.2012 00:00	23.11.2012 00:00		2878	2.57%
14	22.11.2012 00:00	23.11.2012 00:00	Hour1	410	0.36%
15	22.11.2012 00:00	23.11.2012 00:00	Hour2	416	0.37%
16	22.11.2012 00:00	23.11.2012 00:00	Preparation	689	0.61%
17	23.11.2012 00:00	24.11.2012 00:00		9083	7.97%

PM-ANALYZE system software

Hardware interrupts, fault, status and operation messages from various sources contain a wealth of information which often only becomes visible by means of computer-aided analysis.

PM-ANALYZE not only allows the chronological display of messages from different sources. It also provides an optimal overview with its user-friendly filters and analysis options, even if there are large numbers of messages. Analysis results can be imported directly into Microsoft Excel and be further processed there.

By combining and centrally archiving messages from PCS7, WinCC and WinCC RT Professional (TIA Portal), the event log of the operating system, and any other source by means of text import, PM-ANALYZE makes it possible to localize complex interrelations.

Function

The integrated statistical analysis functions provide support in the analysis of errors or weak points:

- Frequency analysis for determining the most frequently occurring messages
- Flickering analysis for localizing messages that occur very frequently within a short period of time (bursts)
- Frequency analysis for analyzing the message traffic within a period of time, divided into smaller intervals (e.g. a complete month divided into days)

Ordering data

Article No.

PM-ANALYZE system software type S

9AE7112-1SS01-1AA0

Single-user/multi-user system server that runs on an interconnected WinCC system

PM-ANALYZE system software type C

9AE7112-4SC01-1AA0

Multi-user system client that runs with system package Type S on an interconnected WinCC system or as thin client (without WinCC)

Note:

Additional PM-ANALYZE configurations available on request.

More information

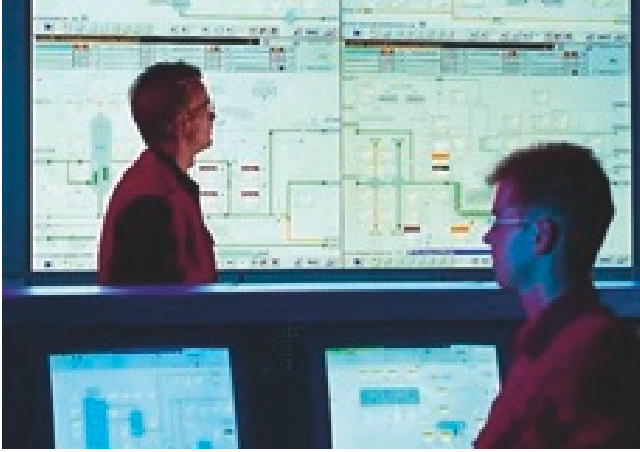
Siemens AG
Industrial Solutions and Services
WinCC Competence Center Mannheim

Phone: +49 (0)621 456-3269
Fax: +49 (0)621 456-3334

E-mail: WinCC.Competence@siemens.com

Additional information is available in the Internet at:

www.siemens.com/process-management

Overview**ShutDown WinCC system software**

If your operator stations fail suddenly because of a power failure, data loss is usually inevitable. Unnecessarily long plant downtimes result. In combination with an uninterruptible power supply (UPS), ShutDown WinCC allows SIMATIC WinCC operator stations to be closed and shut down in a controlled way when the power supply fails, thus reducing plant downtimes to a minimum.

Benefits

- In combination with a UPS, it allows the SCADA system to be shut down safely in the case of a power failure
- Consequential damage such as data loss in the SIMATIC WinCC system is effectively avoided
- Plant downtimes due to power failures are reduced to a minimum

Function

In combination with a UPS, ShutDown WinCC allows the WinCC runtime environment to be shut down in a controlled way and the complete WinCC project to be closed properly.

SIMATIC WinCC itself provides the option of shutting down the WinCC Runtime environment manually. Automatic, system-compatible shutdowns - an essential prerequisite of using a UPS - are not supported by WinCC.

The shutdown sequence can be influenced with ShutDown WinCC by means of various call settings:

- Close WinCC Runtime and quit WinCC projects
- Shut down operator stations
- Shut down operator stations and log out users
- Automatically restart operator stations
- Shutdown at different times for WinCC Master and WinCC Standby Server

The software solution interacts with any standard UPS, provided the available UPS software allows you to start a program automatically if a power failure is detected

Ordering data**Article No.****ShutDown WinCC****2XV9450-1WC05**

Single License for 1 installation,
2 languages (English, German);
Runtime software and electronic
documentation on CD-ROM
In accordance with the system
requirements of WinCC V6 and
WinCC V7

More information

Siemens AG

Industry Sector Industry Automation Division

IT4 Industry Customer Support

Werner-von-Siemens-Straße 60

91052 Erlangen, Germany

Phone: +49 (0)9131 746111

Fax: +49 (0)9131 744757

E-mail: info@it4industry.de

Additional information is available in the Internet at:

www.automation.siemens.de/ShutDownWinCC

Appendix

Conditions of sale and delivery

1. General Provisions

By using this catalog you can acquire hardware and software products described therein from Siemens AG subject to the following Terms and Conditions of Sale and Delivery (hereinafter referred to as "T&C"). Please note that the scope, the quality and the conditions for supplies and services, including software products, by any Siemens entity having a registered office outside Germany, shall be subject exclusively to the General Terms and Conditions of the respective Siemens entity. The following T&C apply exclusively for orders placed with Siemens Aktiengesellschaft, Germany.

1.1 For customers with a seat or registered office in Germany

For customers with a seat or registered office in Germany, the following applies subordinate to the T&C:

- the "General Terms of Payment"¹⁾ and,
- for software products, the "General License Conditions for Software Products for Automation and Drives for Customers with a Seat or Registered Office in Germany"¹⁾ and,
- for other supplies and services, the "General Conditions for the Supply of Products and Services of the Electrical and Electronics Industry"¹⁾.

1.2 For customers with a seat or registered office outside Germany

For customers with a seat or registered office outside Germany, the following applies subordinate to the T&C:

- the "General Terms of Payment"¹⁾ and,
- for software products, the "General License Conditions for Software Products for Automation and Drives for Customers with a Seat or Registered Office outside of Germany"¹⁾ and
- for other supplies and/or services, the "General Conditions for Supplies of Siemens Industry for Customers with a Seat or Registered Office outside of Germany"¹⁾.

2. Prices

The prices are in € (Euro) ex point of delivery, exclusive of packaging.

The sales tax (value added tax) is not included in the prices. It shall be charged separately at the respective rate according to the applicable statutory legal regulations.

Prices are subject to change without prior notice. We will charge the prices valid at the time of delivery.

To compensate for variations in the price of raw materials (e.g. silver, copper, aluminum, lead, gold, dysprosium and neodym), surcharges are calculated on a daily basis using the so-called metal factor for products containing these raw materials. A surcharge for the respective raw material is calculated as a supplement to the price of a product if the basic official price of the raw material in question is exceeded.

The metal factor of a product indicates the basic official price (for those raw materials concerned) as of which the surcharges on the price of the product are applied, and with what method of calculation.

An exact explanation of the metal factor can be downloaded at: www.siemens.com/automation/salesmaterial-as/catalog/en/terms_of_trade_en.pdf

To calculate the surcharge (except in the cases of dysprosium and neodym), the official price from the day prior to that on which the order was received or the release order was effected is used.

To calculate the surcharge applicable to dysprosium and neodym ("rare earths"), the corresponding three-month basic average price in the quarter prior to that in which the order was received or the release order was effected is used with a one-month buffer (details on the calculation can be found in the explanation of the metal factor).

3. Additional Terms and Conditions

The dimensions are in mm. In Germany, according to the German law on units in measuring technology, data in inches apply only to devices for export.

Illustrations are not binding.

Insofar as there are no remarks on the individual pages of this catalog - especially with regard to data, dimensions and weights given - these are subject to change without prior notice.

4. Export regulations

We shall not be obligated to fulfill any agreement if such fulfillment is prevented by any impediments arising out of national or international foreign trade or customs requirements or any embargoes and/or other sanctions.

Export of goods listed in this catalog may be subject to licensing requirements. We will indicate in the delivery details whether licenses are required under German, European and US export lists. Goods labeled with "AL" not equal to "N" are subject to European or German export authorization when being exported out of the EU. Goods labeled with "ECCN" not equal to "N" are subject to US re-export authorization.

The export indications can be viewed in advance in the description of the respective goods on the Industry Mall, our online catalog system. Only the export labels "AL" and "ECCN" indicated on order confirmations, delivery notes and invoices are authoritative.

Even without a label, or with label "AL:N" or "ECCN:N", authorization may be required i.a. due to the final disposition and intended use of goods.

If you transfer goods (hardware and/or software and/or technology as well as corresponding documentation, regardless of the mode of provision) delivered by us or works and services (including all kinds of technical support) performed by us to a third party worldwide, you must comply with all applicable national and international (re-)export control regulations.

If required for the purpose of conducting export control checks, you (upon request by us) shall promptly provide us with all information pertaining to the particular end customer, final disposition and intended use of goods delivered by us respectively works and services provided by us, as well as to any export control restrictions existing in this relation.

The products listed in this catalog may be subject to European/German and/or US export regulations. Any export requiring approval is therefore subject to authorization by the relevant authorities.

Errors excepted and subject to change without prior notice.

1) The text of the Terms and Conditions of Siemens AG can be downloaded at www.siemens.com/automation/salesmaterial-as/catalog/en/terms_of_trade_en.pdf

Industry Automation, Drive Technologies and Low-Voltage Power Distribution

Further information can be obtained from our branch offices listed at www.siemens.com/automation/partner

System Solutions for Industry Interactive Catalog on DVD Products for Automation and Drives, Low-Voltage Power Distribution and Electrical Installation Technology	<i>Catalog</i>	CA 01	
Building Control GAMMA Building Control		ET G1	
Drive Systems SINAMICS G130 Drive Converter Chassis Units SINAMICS G150 Drive Converter Cabinet Units SINAMICS GM150, SINAMICS SM150 Medium-Voltage Converters SINAMICS PERFECT HARMONY GH180 Medium-Voltage Air-Cooled Drives Germany Edition SINAMICS G180 Converters – Compact Units, Cabinet Systems, Cabinet Units Air-Cooled and Liquid-Cooled SINAMICS S120 Chassis Format Units and Cabinet Modules SINAMICS S150 Converter Cabinet Units SINAMICS DCM Converter Units SINAMICS DCM Cabinet SINAMICS and Motors for Single-Axis Drives Three-Phase Induction Motors SIMOTICS HV, SIMOTICS TN <ul style="list-style-type: none"> • Series H-compact • Series H-compact PLUS Asynchronous Motors Standardline Synchronous Motors with Permanent-Magnet Technology, HT-direct DC Motors SIMOREG DC MASTER 6RA70 Digital Chassis Converters SIMOREG K 6RA22 Analog Chassis Converters <i>Digital: SIMOREG DC MASTER 6RM70 Digital Converter Cabinet Units</i> SIMOVERT PM Modular Converter Systems SIEMOSYN Motors MICROMASTER 420/430/440 Inverters MICROMASTER 411/COMBIMASTER 411 SIMOVERT MASTERDRIVES Vector Control SIMOVERT MASTERDRIVES Motion Control Synchronous and asynchronous servomotors for SIMOVERT MASTERDRIVES SIMODRIVE 611 universal and POSMO <i>Note: Additional catalogs on SIMODRIVE or SINAMICS drive systems and SIMOTICS motors with SINUMERIK and SIMOTION can be found under Motion Control</i> <u>Low-Voltage Three-Phase-Motors</u> SIMOTICS Low-Voltage Motors MOTOX Geared Motors SIMOGEAR Geared Motors SIMOGEAR Gearboxes with adapter <u>Mechanical Driving Machines</u> FLENDER Standard Couplings FLENDER High Performance Couplings FLENDER SIG Standard industrial gear unit FLENDER SIP Standard industrial planetary gear units		D 11 D 12 D 15.1 D 18.1 D 21.3 D 23.1 D 23.2 D 31 D 84.1 D 86.1 D 86.2 DA 12 DA 21.1 DA 21.2 DA 22 DA 45 DA 48 DA 51.2 DA 51.3 DA 65.10 DA 65.11 DA 65.3 DA 65.4	
Process Instrumentation and Analytics Field Instruments for Process Automation <i>Digital: SIPART Controllers and Software</i> Products for Weighing Technology <i>Digital: Process Analytical Instruments</i> <i>Digital: Process Analytics, Components for the System Integration</i> <i>Digital: These catalogs are only available as a PDF and/or as an e-book.</i>		FI 01 MP 31 WT 10 PA 01 PA 11	
Low-Voltage Power Distribution and Electrical Installation Technology SENTRON · SIVACON · ALPHA Protection, Switching, Measuring and Monitoring Devices, Switchboards and Distribution Systems Standards-Compliant Components for Photovoltaic Plants 3WT Air Circuit Breakers up to 4000 A 3VT Molded Case Circuit Breakers up to 1600 A <i>Digital: SIVACON System Cubicles, System Lighting and System Air-Conditioning</i> <i>Digital: ALPHA Distribution Systems</i> ALPHA FIX Terminal Blocks SIVACON S4 Power Distribution Boards <i>Digital: SIVACON 8PS Busbar Trunking Systems</i> <i>Digital: DELTA Switches and Socket Outlets</i>	<i>Catalog</i>	LV 10 LV 11 LV 35 LV 36 LV 50 LV 51 LV 52 LV 56 LV 70 ET D1	
Motion Control SINUMERIK & SIMODRIVE Automation Systems for Machine Tools SINUMERIK & SINAMICS Equipment for Machine Tools SINUMERIK 840D sl Type 1B Equipment for Machine Tools SINUMERIK 808 Equipment for Machine Tools SINUMERIK 828 Equipment for Machine Tools SIMOTION, SINAMICS S120 & SIMOTICS Equipment for Production Machines Drive and Control Components for Cranes		NC 60 NC 61 NC 62 NC 81.1 NC 82 PM 21 CR 1	
Power Supply Power supply SITOP		KT 10.1	
Safety Integrated Safety Technology for Factory Automation		SI 10	
SIMATIC HMI/PC-based Automation Human Machine Interface Systems/PC-based Automation		ST 80/ ST PC	
SIMATIC Ident Industrial Identification Systems		ID 10	
SIMATIC Industrial Automation Systems Products for Totally Integrated Automation SIMATIC PCS 7 Process Control System System components SIMATIC PCS 7 Process Control System Technology components Add-ons for the SIMATIC PCS 7 Process Control System		ST 70 ST PCS 7 ST PCS 7 T ST PCS 7 AO	
SIMATIC NET Industrial Communication		IK PI	
SIRIUS Industrial Controls SIRIUS Industrial Controls		IC 10	
Information and Download Center Digital versions of the catalogs are available on the Internet at: www.siemens.com/industry/infocenter There you'll find additional catalogs in other languages. Please note the section "Downloading catalogs" on page "Online services" in the appendix of this catalog.			

More information

WinCC Add-ons:

www.siemens.com/simatic-wincc-addons

WinCC in TIA Portal:

www.siemens.com/tia-portal

WinCC:

www.siemens.com/wincc

WinCC flexible:

www.siemens.com/wincc-flexible

Information and download center:

www.siemens.com/industry/infocenter

Siemens AG
Industry Sector
Industrial Automation Systems
Postfach 48 48
90026 NÜRNBERG
GERMANY

Subject to change without prior notice
Order No.: E86060-K4680-B211-A9-7600
DR.PN.AS.14.XXKG.95.17 / Dispo 07900
KG 0514 1. PES 28 En
Printed in Germany
© Siemens AG 2014

The information provided in this catalog contains descriptions or characteristics of performance which in case of actual use do not always apply as described or which may change as a result of further development of the products. An obligation to provide the respective characteristics shall only exist if expressly agreed in the terms of contract. Availability and technical specifications are subject to change without notice.
All product designations may be trademarks or product names of Siemens AG or supplier companies whose use by third parties for their own purposes could violate the rights of the owners.

www.siemens.com/automation